

Downtown High-Rise Condo Tower

Reduces light energy costs by 55% with LED in parking garage

PROJECT SUMMARY

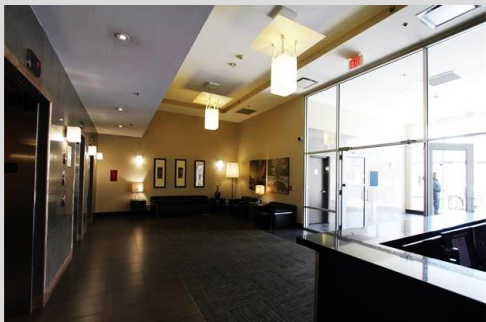


210 15th Avenue – Vetro

34 storeys high-rise condominium. Retrofit of lobby, suite corridor, stairwells, parking garage, and common areas.

Before: 834 fluorescent T8 tubes; 549 CFL fixtures, sconces and pot lights; 93 halogen pot lights; 26 CFL fixtures

After: 834 LED T8 tubes; 549 LED fixtures, sconces and pot lights retrofit kits; 93 LED pot lights; 26 LED fixtures



Annual Savings

55% reduction or
228,735 kWh

5-Year Cash Savings

\$145,175

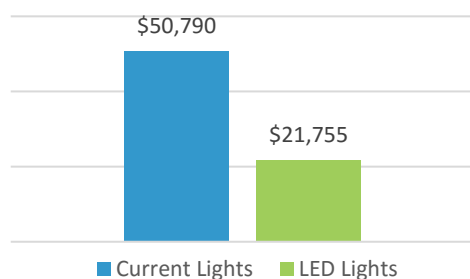
Payback Period

27 Months

Hassle Free Warranty

No replacement or labour costs for 5 years

Annual Operating Expense



By replacing CFL fixtures, sconces and pot lights, fluorescent tubes, CFL lamps, and halogen pot lights with Energy Star and DesignLight Consortium qualified LEDs, management and the condo board achieved:

- Immediate 55% reduction in energy consumption
- \$145,000+ in energy savings over first 5 years
- \$0 parts and labour costs for 5 years